



No.05: 2024/25 Cropping Season

Review of November 11-20, 2024, and Outlook for November 21-30, 2024

HIGHLIGHTS

- The expected heavy rain over western regions and the Lake Victoria basin may likely affect crops due to excessive soil moisture and waterlogging
- Farmers particularly over unimodal areas are advised to plant crops when soil is moist enough to support crop germination
- Water users are advised to harvest rainwater for future use

SYNOPTIC SUMMARY DURING NOVEMBER 11-20, 2024

During the dekad, the southern hemisphere high pressure systems (St. Helena and Mascarene) continued to relax while the northern hemisphere high pressure systems (Azores and Siberian) continued to intensify. This condition maintained the gradual southward movement of the meridional arm of the ITCZ, into areas along Lake Victoria Basin, the western part of our country, and the southwestern highlands.

On the other hand, the Sea Surface Temperatures (SSTs) over the northeast area were warmer than normal. This condition enhanced the formation of tropical cyclone “Bheki” whose position diffused the zonal arm of the ITCZ over our areas, especially along the coastal and nearby regions.

The above weather systems resulted in thundershowers over the Lake Victoria Basin, the western part. A few periods of rain showers were also observed over the coastal areas and southwestern highlands.

RAINFALL PERFORMANCE DURING NOVEMBER 11-20, 2024

During the dekad, most areas of the country experienced rainy conditions with amounts ranging from 1 mm to 100mm. However, a few areas over Tabora, Shinyanga, and Pwani experienced dekad rainfall of more than 100 mm while few areas in Kigoma region experienced more than 250mm as shown in Figure 1.

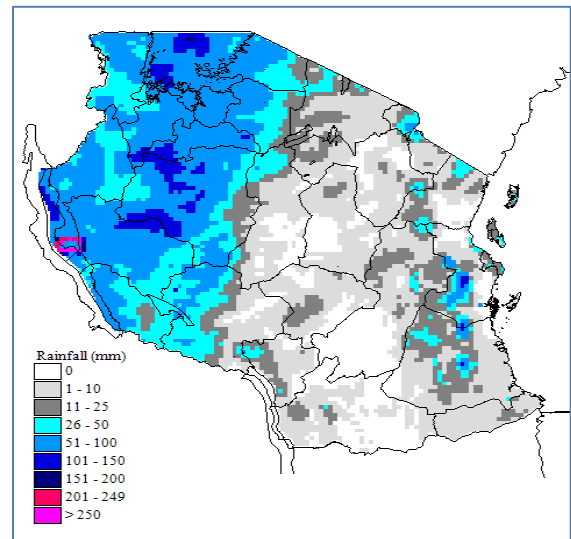


Figure 1: Total dekad rainfall for November 11-20, 2024

AGROMETEOROLOGICAL SUMMARY DURING NOVEMBER 11-20, 2024

During the dekad under review, some areas of the country experienced rainy conditions that supported crop establishment particularly maize that are at vegetative stages around the Lake Victoria basin and northern coast. This condition also supported the crop planting activities over the unimodal areas particularly in Tabora, Kigoma, and Katavi regions while few farmers continued with land preparation.

No.05: 2024/25 Cropping Season

Water and pasture for livestock and wildlife slightly improved particularly in the areas that experienced rain conditions.

Review of November 11-20, 2024, and Outlook for November 21-30, 2024

The northeastern highlands (Arusha, Manyara, and Kilimanjaro regions), northern coast (Tanga, northern part of Morogoro region, Pwani, Dar es Salaam regions, including the isles of Unguja and Pemba), and central areas (Dodoma and Singida regions) are expected to experience rain showers over few areas.

**HYDROMETEOROLOGICAL CONDITIONS
DURING NOVEMBER 11-20, 2024**

**AGROMETEOROLOGICAL OUTLOOK AND
ADVISORY DURING NOVEMBER 21-30, 2024**

Water levels in dams and river flow discharges slightly increased particularly over Lake Tanganyika and Victoria basin where a slight increase in water level was observed.

The expected rainy conditions over some areas are likely to support soil moisture replenishments for crop growth and development. However, the expected heavy rain over western regions and Lake Victoria basin may likely affect crops due excessive soil moisture and waterlogging.

**EXPECTED SYNOPTIC CONDITIONS
DURING NOVEMBER 21-30, 2024**

Farmers particularly over unimodal regions are advised to plant crops when the soil is moist enough to support seed germination. However, they are advised to plant early maturing crops

During this period, the southern hemisphere high pressure systems are expected to continue relaxing while the northern hemisphere high pressure systems are expected to continue intensifying. This condition is expected to maintain the gradual southward movement of the meridional arm of the ITCZ, into areas along Lake Victoria Basin, the western part of our country, and southwestern highlands.

Fishing communities are advised to continue making follow-ups on daily weather forecasts, especially for the Indian Ocean and the Great Lakes to make decisions on the right time to go out for fishing to avoid the effects of severe weather particularly strong winds and large waves.

On the other hand, the SSTs over the area between the north of Madagascar and the East African coast are expected to be warmer than normal. This condition is expected to enhance the formation of low-pressure systems over that area hence, improving the precipitation-making mechanisms (zonal arm of ITCZ) over coastal areas of our country and nearby areas.

**EXPECTED HYDROMETEOROLOGICAL
CONDITIONS DURING NOVEMBER 21-30, 2024**

**EXPECTED WEATHER CONDITIONS DURING
NOVEMBER 21-30, 2024**

Water levels in dams and river flow discharges are expected to remain normal. Water users are advised to harvest rainwater for future use.

Areas around the Lake Victoria Basin (Kagera, Geita, Shinyanga, Mwanza, Simiyu, and Mara regions) and western regions (Kigoma, Katavi, and Tabora regions) are expected to experience thundershowers with periods of heavy rainfall over **most areas**.

The southwestern highlands (Rukwa, Songwe, Mbeya, Njombe, and Iringa regions), are expected to feature thundershowers over a few areas.

Southern regions (Ruvuma region and southern part of Morogoro region) and southern coast (Mtwara and Lindi regions) are expected to feature light rain showers over few areas.